

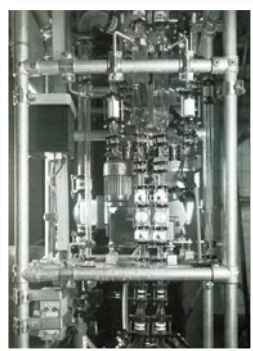
Pumps



P u m p s

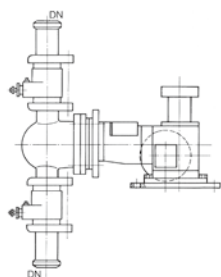
6. PUMPS

6.1 Single Metering Pump

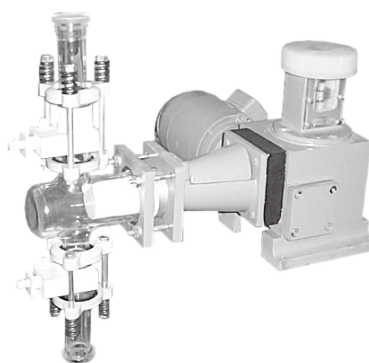


Features:

- The pump head is made of borosilicate glass 3.3 and PTFE, easy to monitor, non-pollution and anti-corrosion.
- Small size, light weight, continuous operation.
- Permanent seals to prevent leakage.



DN	L/h	MPa	CAT. NO.
25	0-360	0.3	QB-JL-25
50	0-640	0.3	QB-JL-50

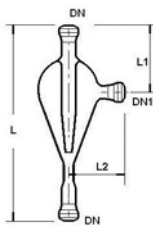


6.2 Jet Air Pumps

Jet pumps are designed and made on the basis of Venturi principle.

Due to the limitation of the welded glass units, fine measurement control is difficult and we can only provide the following data as references: The jet liquid, as a power force, has a pressure of 0.25Mpa; a negative pressure of 0.02-0.09Mpa can be obtained for different models, which means a flow of 20-200L/min.

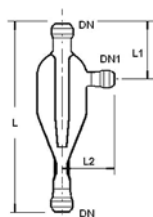
6.2.1 Type A



SIZE	DN	DN1	L	L1	L2	CAT. NO.
1#	15	15	280	100	90	QB-PS-A1#
2#	25	15	350	130	115	QB-PS-A2#
3#	40	15	390	150	115	QB-PS-A3#
4#	50	25	450	190	140	QB-PS-A4#

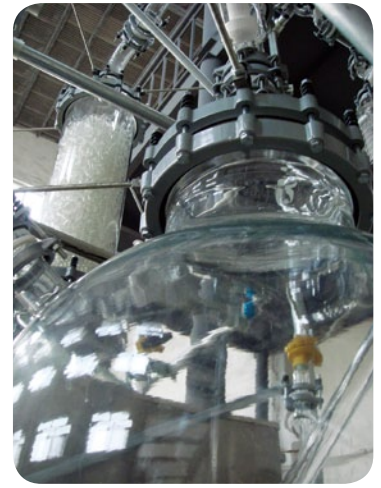
This type is suited for synthesizing reaction, involving two substances in a certain proportion.

6.2.2 Type B



SIZE	DN	DN1	L	L1	L2	CAT. NO.
1#	25	15	385	100	90	QB-PS-B1#
2#	40	25	495	130	115	QB-PS-B2#
3#	50	25	675	150	115	QB-PS-B3#
4#	80	40	835	190	140	QB-PS-B4#

This type is suited for absorbing relative emission or the obtain of negative pressure.



BOMEX GLASS